

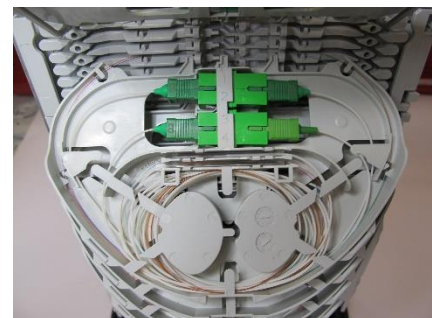
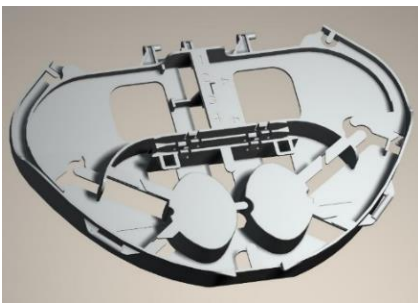
FIST-SOSA2-2SP-S

FIST Splice/patch sub assembly kit with 2 trays and 1 groove plate, each for holding up to 2 fiber adapters (2SC simplex or 2 LC duplex) and 8 splice protectors

A splice patch tray which fit all FIST MK2 organizers and provide a unique solution when a small number of patch/test or demarcation points is required and this at any possible location in the network.

This splice patch tray can be called: "all in one" as this solution provides the patch, splice and fiber storage in one 3UMS space consuming tray and is compatible with all FIST MK2 trays

Another great feature is the compactness: current patch panels used in closures, MDU's are rather space consuming and bulky. One can build/expand as required



Features and Benefits

- Proven FIST fiber management system
- Compatible with all FIST MK2 trays and groove plates
- Can be mixed with all FIST MK2 trays
- Compactness: 3 UMS positions per tray
- Splicing capacity: 8 x smouv 45 mm
- 2SC Simplex or 2 LC Duplex adapters (flangeless)

Ordering Information:

FIST-SOSA2-2SP-2

Kit contains: 1 groove plate, 2 trays and installation instruction

http://homeapps2.commscope.com/catalog/cabinets_panels_enclosures/product_details.aspx?id=95703